



Hammersmith Grove, Hammersmith, W6

£1,950 Per Month

**** All bills are included in the rent ****

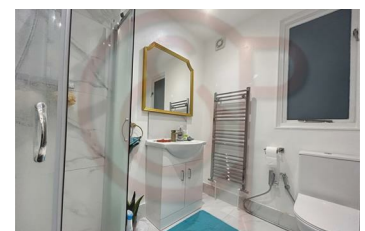
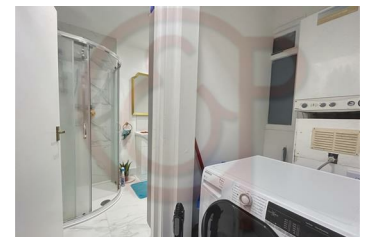
Recently refurbished studio flat situated on the first floor in the heart of Hammersmith & Shepherd's Bush on one of the best streets in Hammersmith.

The property comprises a sitting space, a sleeping space, a study space/dining space, a separate kitchen, a washer & dryer and a modern bathroom.

The property benefits from recently refurbished, all bills are inclusive, wood floors, gas central heating and ample storage space.

The property is located minutes away from Hammersmith tube station (Piccadilly, District, Circle and Hammersmith & City lines), Goldhawk Road station (Circle and Hammersmith & City lines) and Shepherd's Bush station (Central line).

- All bills are included
- Self-contained studio
- Separate kitchen
- Sitting & sleeping space
- Modern bathroom
- Washer & dryer
- Gas central heating
- Wood floors throughout
- Close to Goldhawk Road station
- Easy access to Hammersmith station



Energy Efficiency Rating		Environmental Impact (CO ₂) Rating	
Current	Target	Current	Target
Energy efficient: lower heating costs		Very environmentally friendly: lower CO ₂ emissions	
A		A	
B		B	
C		C	
D		D	
E		E	
F		F	
G		G	
Not energy efficient: higher heating costs		Not environmentally friendly: higher CO ₂ emissions	
England & Wales	2008/1/EC	England & Wales	2006/1/EC